

SPIDER 43T

SELF-PROPELLED AERIAL WORK PLATFORMS

PROVISIONAL

PLATFORM
BASKET



The top of the range PLATFORM BASKET

SPIDER 43T offers a huge 43m working height and an unbeatable side outreach with 330kg of basket capacity.

The strong steel boom provide a stable ride and the telescopic flying jib ensure an incredible up and over maintaining 8m of outreach. The design of the undercarriage specifically conceived to move up and down the tracks

system enabling compactness when through downways and excellent clearance to move the machine off road.

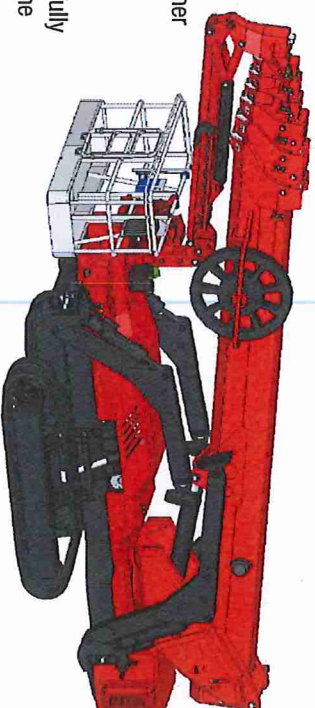
This model like most of the Platform Basket range, can be bought with different power solutions: Engine + Electric motor 380Vac or fully electric powered by big battery box or Hybrid offering other than the diesel engine a group of Lithium batteries for making the

machine versatile to any type of use.

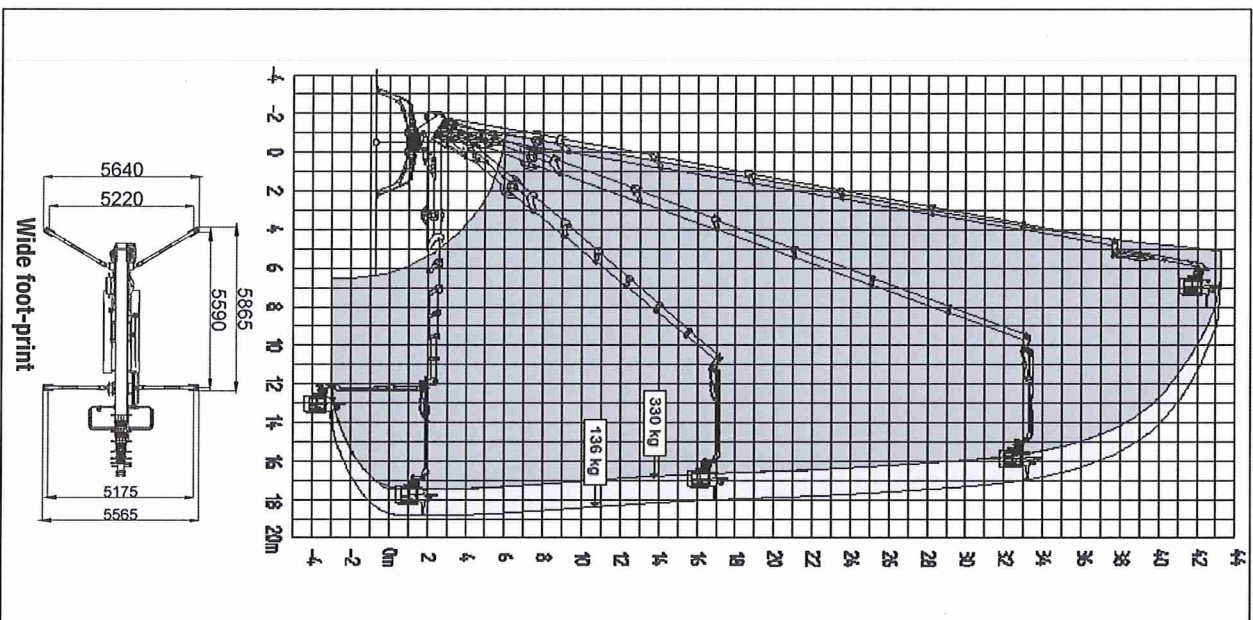
The Radio remote control unit is another peculiarity of Platform Basket models.

Easy to use and precise to steer the machine in any working condition.

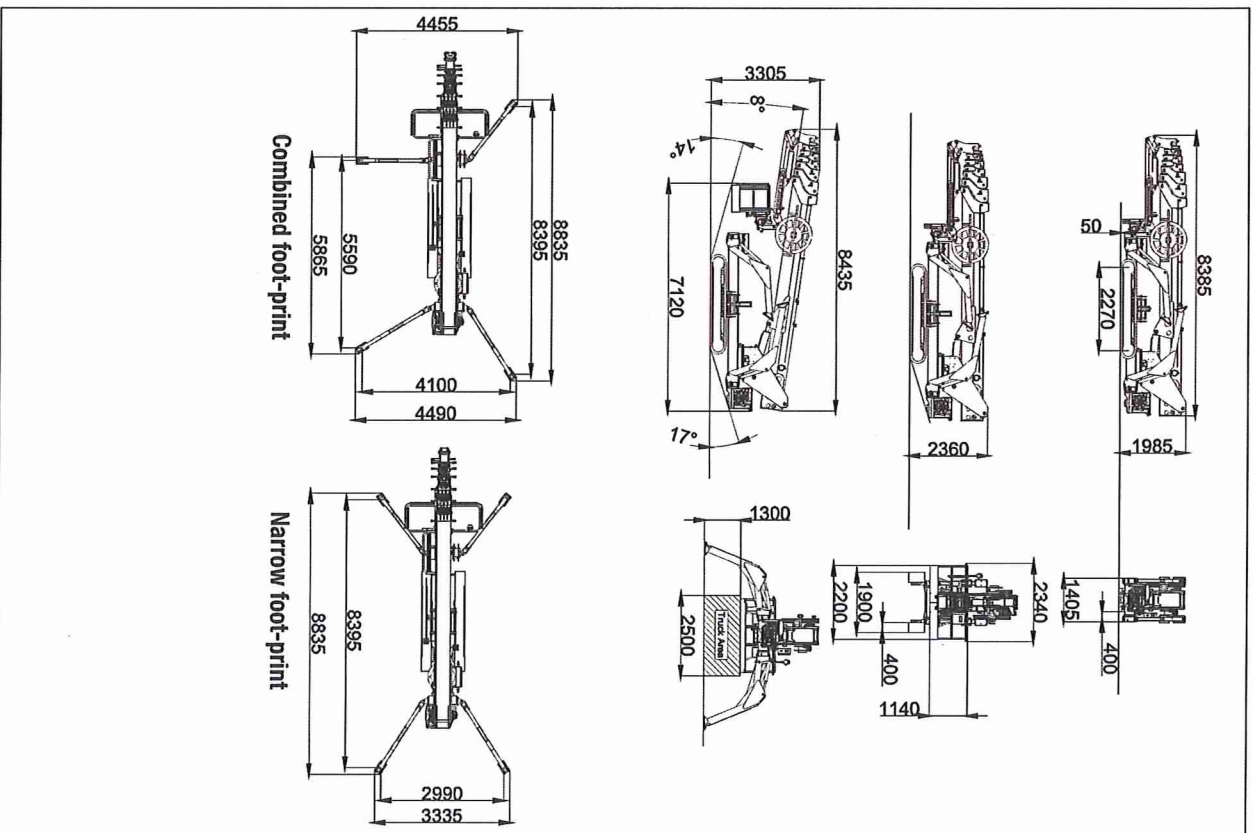
On demand the model is equipped a fully hydraulically assisted positioning of the legs.



WORKING ENVELOPE



OVERALL DIMENSIONS



TECHNICAL DATA	VERSION	
	STD	ED
Max working height	m	43,20
Max height basket floor	m	41,46
Max side outreach	m	18,20
Rotation angle	°	360 endless
Basket size (standard version)	m	2,2 x 0,8
Basket rotation angle	°	90+90
Max basket capacity (2 men)	Kg	330
Length in stowed position (with detached basket)	m	8,44
Min width in stowed position	m	8,39
Min height in stowed position	m	1,41
Stabilization foot-print	m	1,99
Max gradeability	deg/%	wide 5,64 x 5,87 narrow 3,34 x 8,84
Max side gradeability	deg/%	17° (31%)
Max speed	Km/h	2,0
WEIGHTS		
Weight in working config.*	Kg	STD 11000 ED 11300
Ground pressure stowed machine (narrow tracking)	KN/m ²	9,16 9,41
Ground pressure when on stabilizers.	KN/m ²	3,66 3,76
Max point load per outrigger plate	KN	70,1 72,1
POWER		
Engine D1803 Kubota diesel	hp/rpm	STD 37/2700 ED 37/2700
Electric motor 380V/4c	hp/Volt	15/380
Electric motor 48V/4c	hp/Volt	- 9,4/48
Battery capacity 48V/4c lithium-ion	Ah	- 300
Battery charger - lead battery	Ah	-
Battery charger - Lithium-ion	Ah	100/50

REV.1 del 0/04/2018 - DATI, DIMENSIONI E CARATTERISTICHE SONO FORNITI A TITOLO INDICATIVO E NON IMPEGNATIVO